

Recreate This Photo: A Hands-On Program

<https://flagpolephotographers.com/club-events/recreate-this-photo-a-hands-on-program>

Robyn Abrams: Flaming Pepper

Colleen Robinson: Water Droplets

Chane Cullens: Crystal Prism



Flaming Pepper

Robyn Abrams

Photographing Fire

- Shutter speed $\approx 1/250s+$ to freeze flame motion
 - Compensate with wider aperture / higher ISO
 - Overexpose +1 to +2 EV to preserve flame detail
 - Meter and test before composing
 - Apply composition (e.g., rule of thirds) after exposure
 - Slow shutter + tripod for spark trails and motion effects
-

• Fire Within a Scene

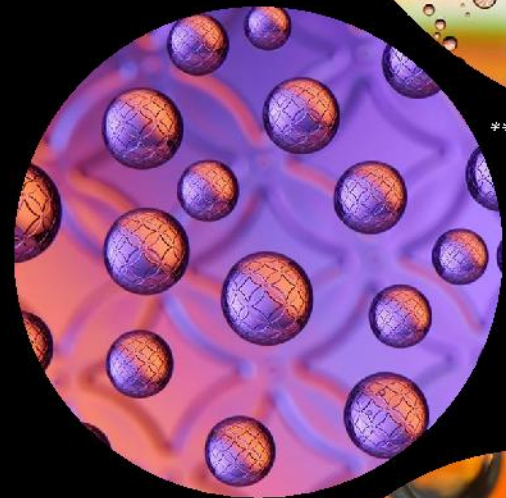
- Meter for the flame as the primary highlight
- Expose flames first, then add fill light to the environment
- Use spot metering and confirm exposure with test shots
- When lighting control is limited, place flames against a dark, high-contrast background

Macro Water Droplet Photography

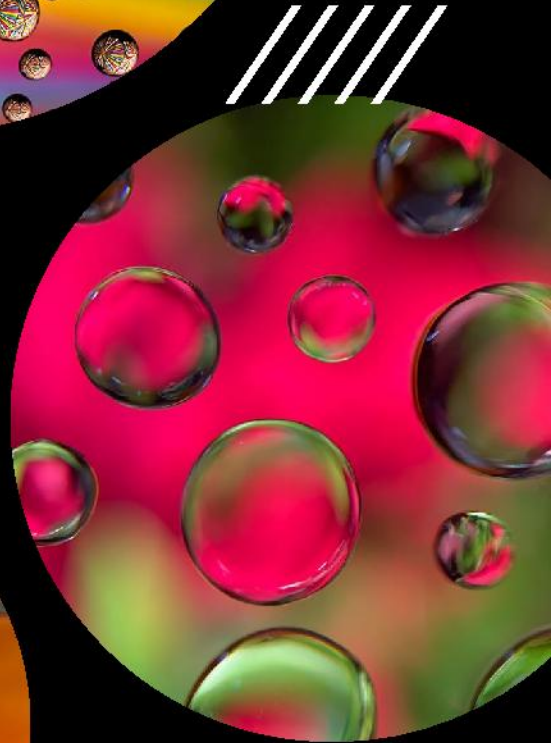
Colleen Robinson



**{1}



**{2}



Water Droplet Photography



Equipment



A camera that allows you to adjust focus and aperture settings manually



A macro lens or extension tubes to reduce minimum focusing distance



A tripod to keep the camera steady



A remote shutter release or self-timer to prevent camera shake



A light source (natural or artificial) to illuminate the subject



A spray bottle or syringe for creating the water droplets



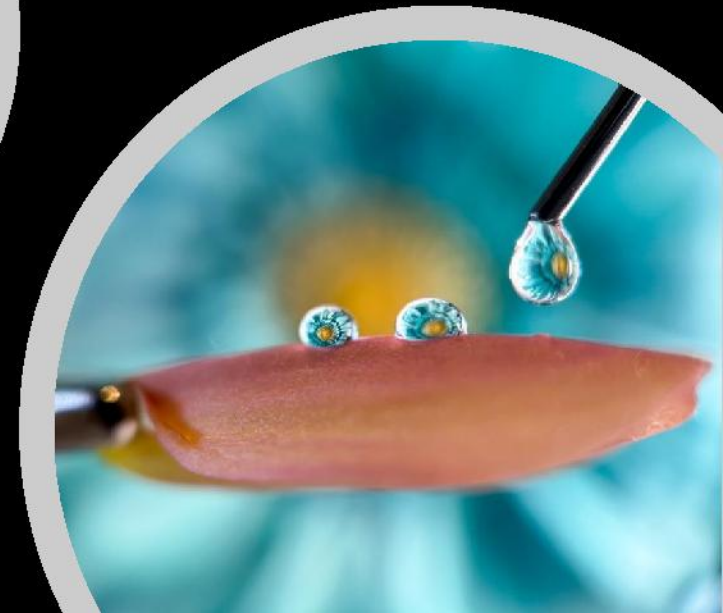
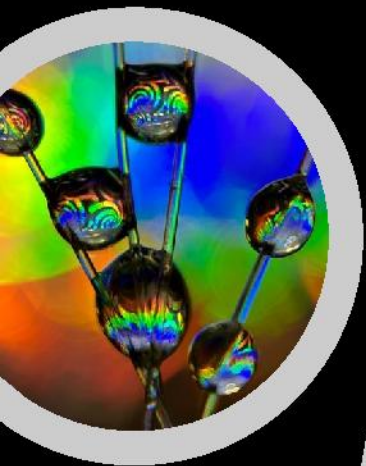
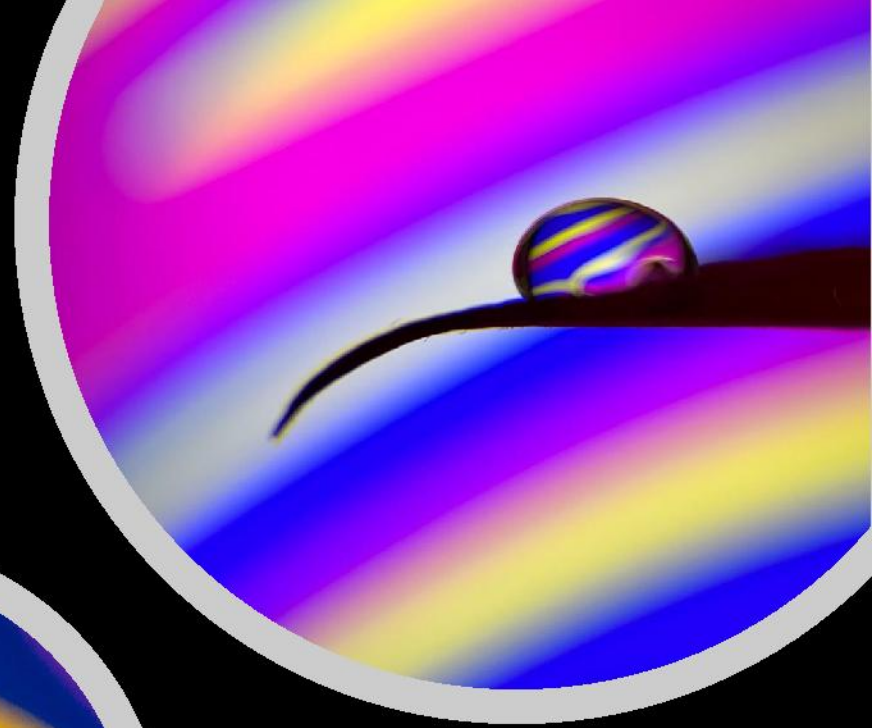
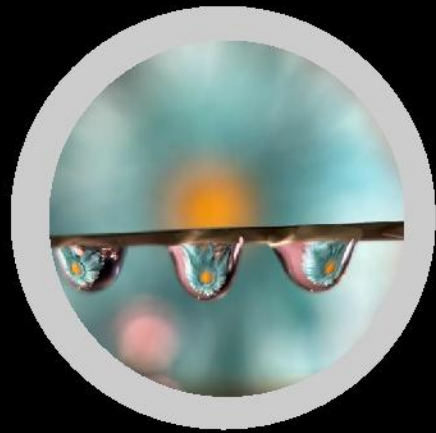
A surface to place the water droplets on, such as a glass surface or plant leaves.

Setting up your shot

- Obtain a piece of glass – Picture Frame, Hobby Store, Glass Table
- Create a stand for your glass
 - Pile of Books, Soda Cans, 2 Chairs... whatever is handy
- Clean the glass and apply “Rain-X”
- Position camera on Tripod facing down to glass
- Place subject under glass
 - Colored Paper, Colorful Objects – Flowers/Candy, iPad Image
- Arrange lighting on Subject
- Spray Water drops or place in pattern with syringe
- Experiment with lighting, droplet size/placement and various subjects

Alternatives

- More ideas to try at home
- Balance water droplets above or below objects



Chane Cullens: Crystal Prism



Clear Glass

Tablet

Light Source - 50 slides

Separator

Create or Find Colors and Patterns

Fake Ice Cubes or Real

Bubbles - from Clear Sparkling Water

Dark - Keep Away from Ambient Light

Optional Light Painting

Camera Settings

- Aperture Priority – range 6 to 8
- ISO – 100 to 800
- Speed – use a tripod
- 2 to 3 stops underexposed

Review and Adjust – Settings, Tripod

